

The 19" shelf "NETshelf" from apraNET is designed for system components such as Routers, switches or other active network elements which are not 19"-installable. Compared to conventional shelves made from sheet metal, it is particularly characterized by its compact design and a fast, tool-free mounting by means of a latching mechanism in the 19" vertical mounting therefore it is suited for installation of network components with low weight.

Convincing product characteristics

- flexible application in all 19 " cabinet and enclosure systems
- fast, tool-free assembly
- compact design
- attractive design thanks to rounded front surface
- only 1U for mounting required
- disassemble and resume at any time
- Weight savings compared to conventional metal shelves
- passive ventilation by a perforated bottom
- Cutouts in the bottom area allows to fix System components with Velcro tape (Velcro strap available as accessory)

Dimensions (H x W x D):

44 x 483 (19 ") x 116 mm

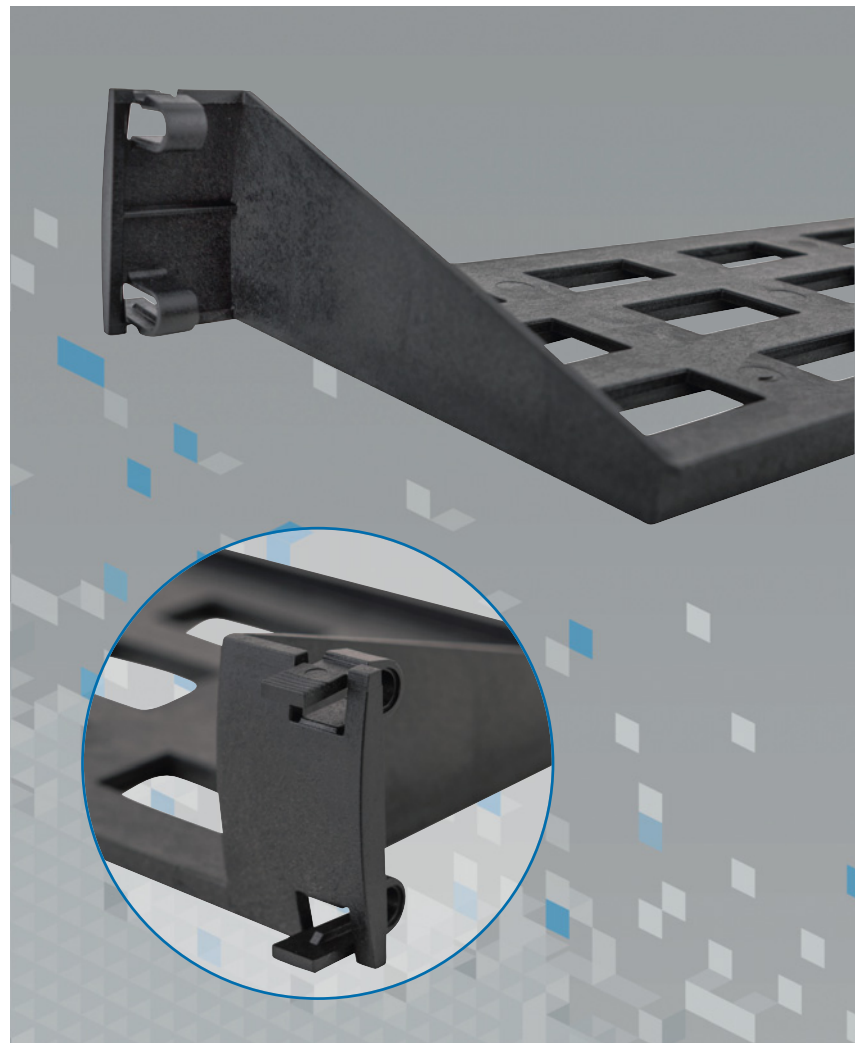
Shelf area (W x D): 425 x 110 mm

Material: plastic, black, halogen free

Fire protection class: UL94 – V1

Load capacity: 1 kg (surface load)

Packing unit: 1 piece



Order no.

213-156-54