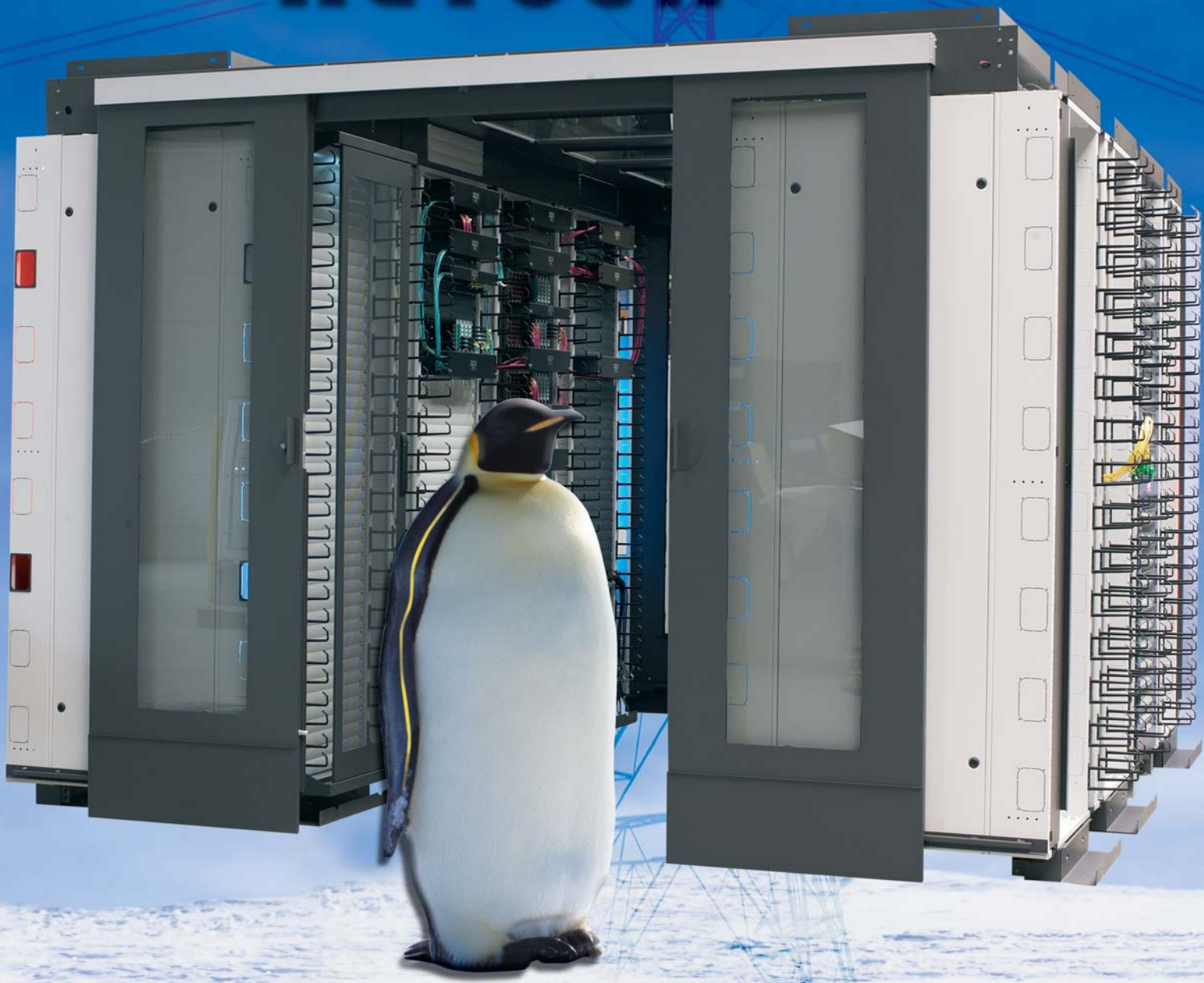


More than 40 years of experience in cabinet solutions



19" cabinet system **NETcell**



... the perfect shell for valuable electronics



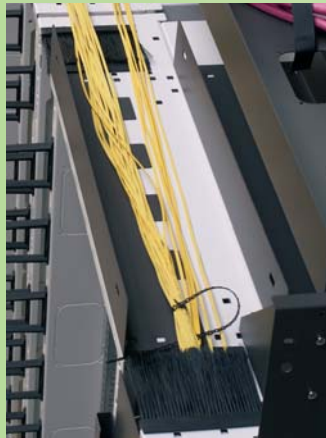


NETcell



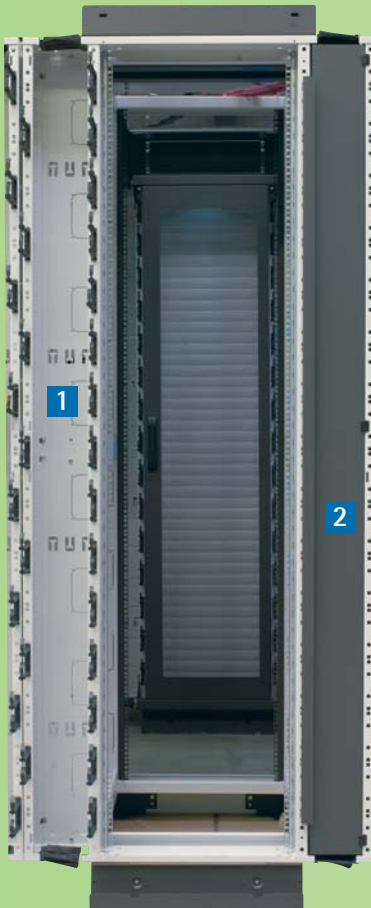
Cable tray for excess length of cable

- in case of connected rack installation it can also be used as trunking system



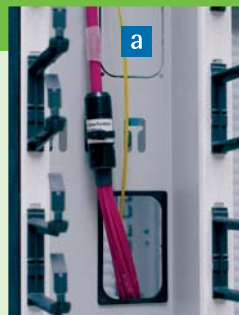
Modular cable trays

- for separate routing of data and power cables



Cable management

- designed for easy routing of high volume of data and power cables (vertical and horizontal)
- **break-outs a** for individual cable management from front to back or sideways
- **with cable tidy rings 1** for quick cable routing and clearly arranged handling
- self locking cable duct door **2** to cover the spacious cable channels (aperture angle 180°)





- the clever 19" rack system for your data centre: effective cooling and optimised cable management perfectly combined



... flexibility without limits!



Transparent corridor cover

- for the illumination of the working area, dismantlable for easy access to the cool corridor
- additional 3 U mounting area for e.g. power supply, lighting, etc.



Interior view cool corridor

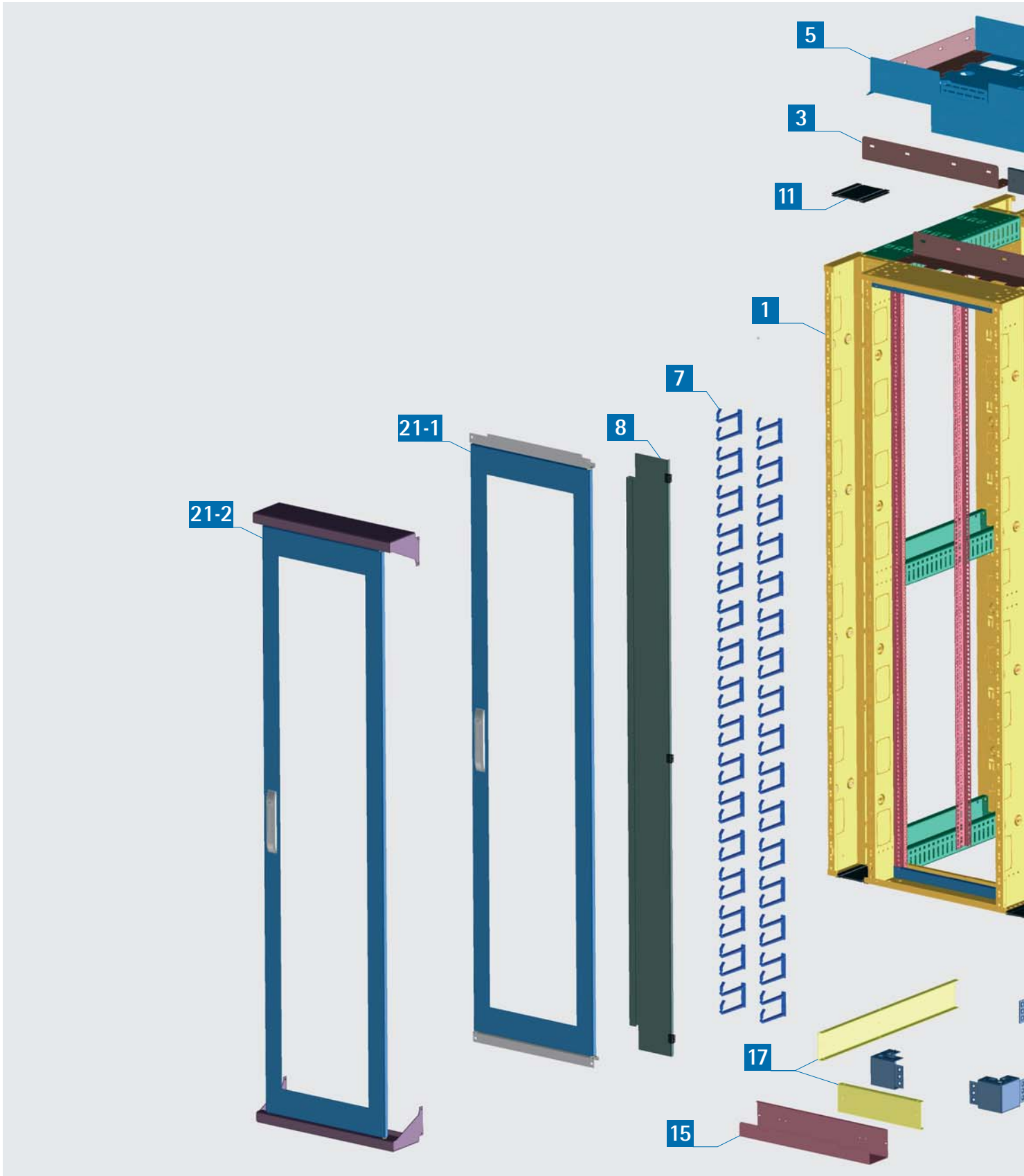


Front and rear sliding doors

- manual handling or electrically controlled
- lockable version optionally available

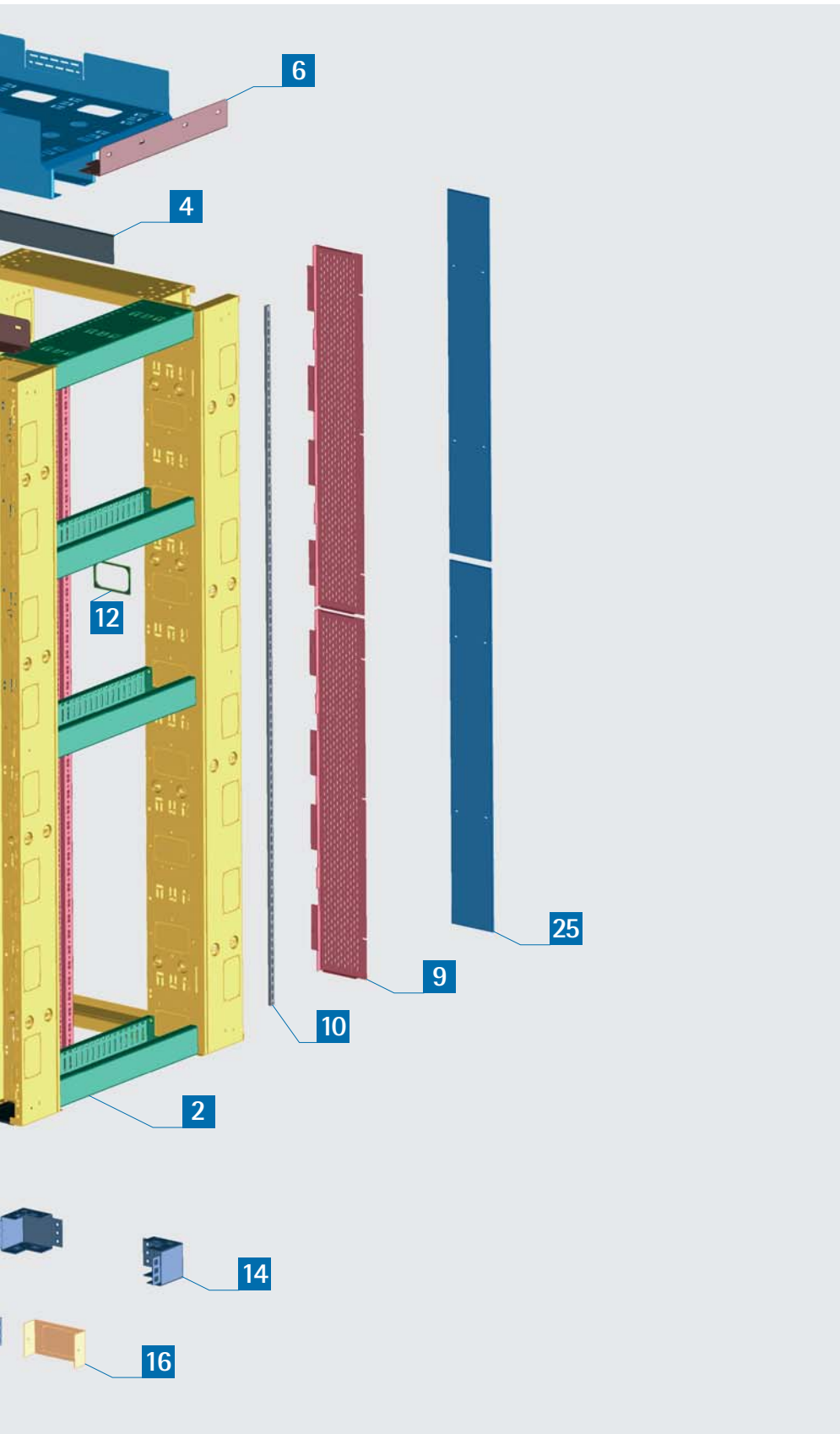


Individual configuration: Configure your individual cabinet.

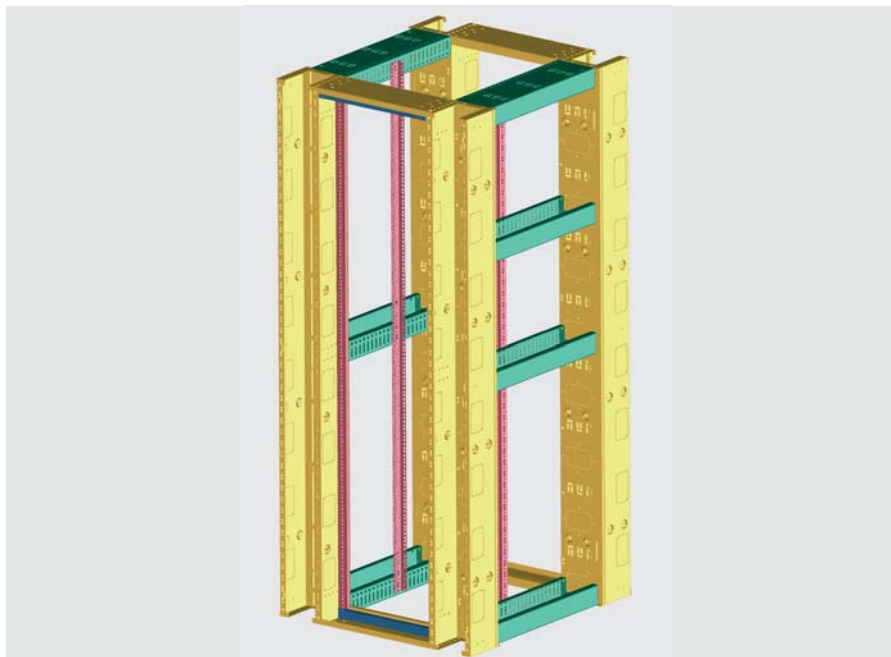




Select your required cabinet components step by step.



Pos.	Description	Page
1	Basic system	6
2	Cable tray (cross bar)	7
3	Cable routing angle bracket	7
4	Cover for cable routing angle bracket	7
5	Excess cable tray	7
6	Cover mask for excess cable tray	7
7	Cable hoops (set)	7
8	Drop shutter	7
9	Mounting plate	7
10	Universal guide rail for cable duct	7
11	Brush set for cable duct	8
12	Edge guard	8
13	Adjusting feet (set) (without fig.)	8
14	Base corner set	8
15	Cable tray for mounting on cabinet base	8
16	Serial base cover (without fig.)	8
17	Base cover, solid	8
18	19" cover panel (without fig.)	8
19	Sliding rail, depth adjustable (without fig.)	8
20	Side panel (without fig.)	9
21-1	Door ventilated (80% perf.) flush mount	9
21-2	Door ventilated (80% perf.) for cable clips	9
22	Locking system for doors and side panels (without fig.)	9
23	Connector (without fig.)	9
24	Cable tray set (without fig.)	9
25	Cover for cable duct	10
26	Corridor cover (without fig.)	10
27	Sliding door system (without fig.)	10



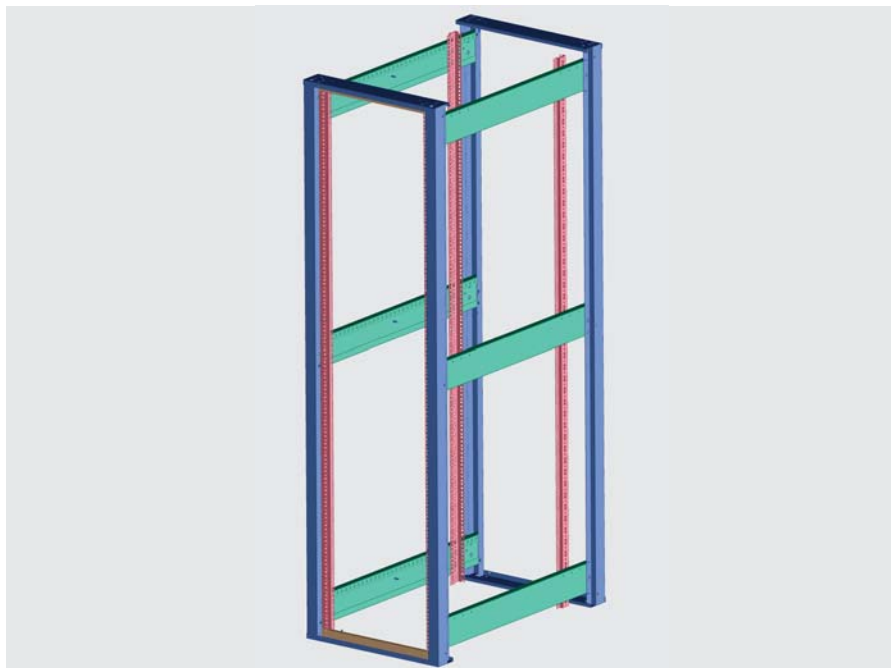
1 Basic system, dismantlable

The cabinet system consists of two identical frames with integrated cable ducts, cross bars and 19" level with cover masks at the front.

Basic system "900" consisting of:

- frame with integrated cable ducts (2x)
- cross bars (cable tray) (6x)
- 19" level (2x)
- cover masks (2x)

Dimensions (WxH) mm	Dimensions (D) mm	Colour	Order no.
900 x 2200 (46 U)	800	RAL 7035	583-908-12
	1000	RAL 7035	583-910-12
	1200	RAL 7035	583-912-12
900 x 2200 (46 U)	800	RAL 9005	583-908-82
	1000	RAL 9005	583-910-82
	1200	RAL 9005	583-912-82



Serial system, dismantlable

The system consists of two identical frames, cross bars and 19" level with cover masks at the front.

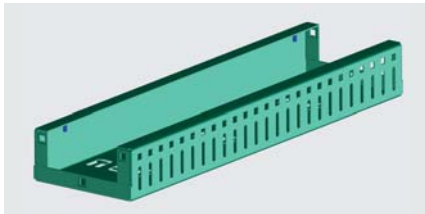
Serial system "600" consisting of:

- frame (2x)
- cross bars (6x)
- 19" level (2x)
- cover masks (2x)

Dimensions (WxH) mm	Dimensions (D) mm	Colour	Order no.
600 x 2200 (46 U)	800	RAL 7035	583-608-12
	1000	RAL 7035	583-610-12
	1200	RAL 7035	583-612-12
600 x 2200 (46 U)	800	RAL 9005	583-608-82
	1000	RAL 9005	583-610-82
	1200	RAL 9005	583-612-82



2 Cable tray (cross bar)

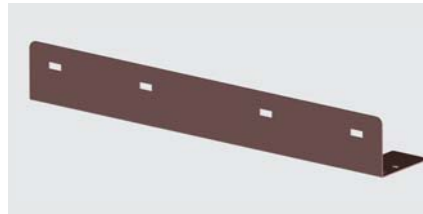


- for cable routing
- mounting between front and rear frame

Material: sheet metal

Colour	Depth	Order no.
RAL 7035	800	583-000-01
RAL 9005	800	583-005-01
RAL 7035	1000	583-000-69
RAL 9005	1000	583-005-69
RAL 7035	1200	583-000-02
RAL 9005	1200	583-005-02

3 Cable routing angle bracket



- for building up a cable channel system on top of the cabinet system

Material: sheet metal

Colour	Order no.
RAL 7035	583-000-73
RAL 9005	583-005-73

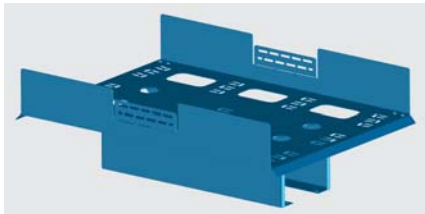
4 Cover for cable routing angle bracket



- for row installation of cabinets: covers space between two brackets on the front ends of the basic / serial cabinet system

Colour	Order no.
RAL 7035	583-000-74
RAL 9005	583-005-74

5 Excess cable tray

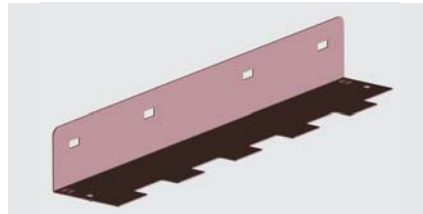


- for storage of excess cable length or as trunking system for row installation of cabinets

Material: sheet metal

Colour	Width	Order no.
RAL 7035	600	583-000-94
RAL 9005	600	583-005-94
RAL 7035	900	583-000-72
RAL 9005	900	583-005-72

6 Cover mask for excess cable tray



- for covering the excess cable tray on the front ends

Material: sheet metal

Colour	Order no.
RAL 7035	583-000-73
RAL 9005	583-005-73

7 Cable hoops

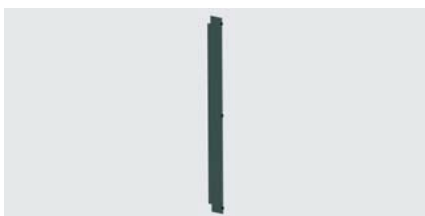


- to be clipped onto the front of the cable duct
- set = 30 pieces (1 cable duct)

Material: plastic

Order no. (set)
583-001-12

8 Drop shutter



- for covering the cable duct
- with hinges for quick opening / closing

Material: sheet metal

Colour	Order no.
RAL 7035	583-000-83
RAL 9005	583-005-83

9 Mounting plate



- for individual mounting of e.g. PDU, cable hoops etc.
- perforated
- to be mounted in cable duct (rear wall)

Colour	Order no.
RAL 7035	583-000-98
RAL 9005	583-005-98

10 Universal guide rail for cable duct

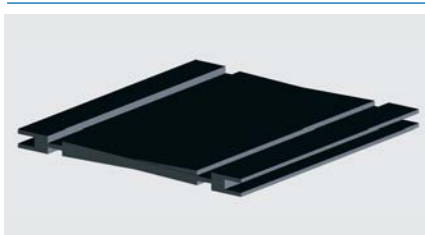


- mounting possible on all sides of the cable duct (max. 2 per side)
- for individual mounting of e.g. PDU, cable hoops etc.
- fastening of components with sliding nuts (4 included)
- length: 2m

Order no.
583-001-11



11 Brush set for cable duct



- set = 8 pieces
- Material: plastic

Order no.
583-001-15

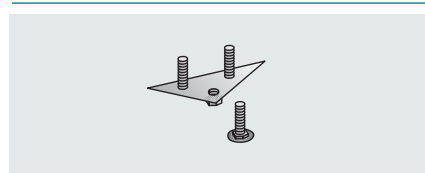
12 Edge guard



- retrofittable edge guard for use in cable ducts
- set = 10 pieces
- Material: plastic

Order no.
583-001-10

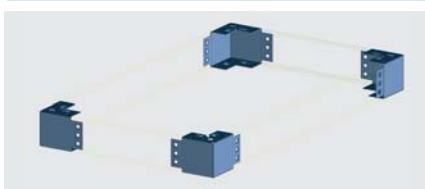
13 Adjusting feet (set = 4 pieces)



- to be screwed onto the rack or to the corners of the base
- set = 4 pieces

Description	Order no. (set)
mounting on rack	500-001-28
mounting on base	318-026-02

14 Base corner set

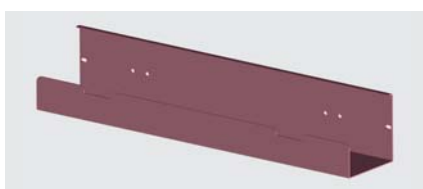


- Set = 4 pieces
- assembly material included

Material: sheet metal

Colour	Order no. (set)
RAL 7035	318-100-00
RAL 9005	318-200-00

15 Cable tray for mounting on cabinet base

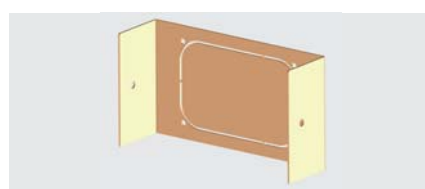


- for routing of cables
- to be used with base corner set
- two mounting positions possible

Material: sheet metal

Colour	Order no.
RAL 7035	583-000-70
RAL 9005	583-005-70

16 Serial base cover

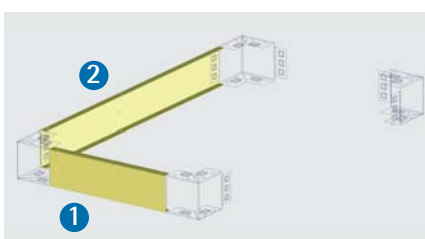


- covers space between two base-mounted cabinets

Material: sheet metal

Colour	Order no.
RAL 7035	583-000-71
RAL 9005	583-005-71

17 Base cover, solid



- 4 covers complete one base
- Material: sheet metal

Type	W/D	Colour	Order no.
1	900	7035	318-100-10
	900	9005	318-100-18
	600	7035	316-100-10
	600	9005	316-200-10
2	800	7035	316-100-04
	800	9005	316-200-04
	1000	7035	316-101-10
	1000	9005	316-201-06
	1200	7035	316-103-20
	1200	9005	316-203-05

18 19" cover panel

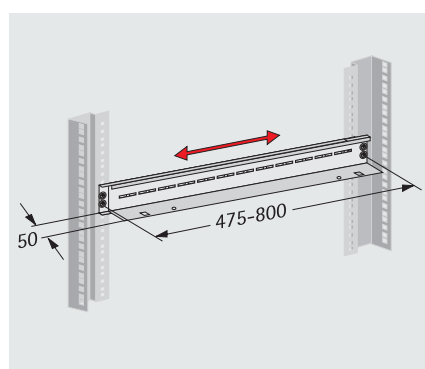


- to be clipped onto the 19" level
- quick mounting without tools
- set = 10 pieces

Material: plastic

U	RAL 7035	RAL 7016
1	213-156-30	213-156-25

19 Sliding rail, depth adjustable



- adjustable in depth
- supports heavy 19" plug-in units (e.g. servers) regardless of the distance between first and second 19" mount

Load capacity: 50 kg / pair
Material: sheet metal, galvanized

Order no. (pair)
316-544-20



20 Side panel

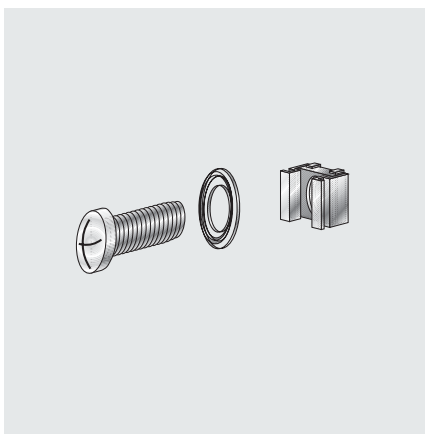


- with 4 sash fasteners (operation via "double-bit key 5mm")

Material: sheet metal

Colour	Depth	Order no.
RAL 7035	800	583-000-04
RAL 9005	800	583-005-14
RAL 7035	1000	583-000-84
RAL 9005	1000	583-005-84
RAL 7035	1200	583-000-07
RAL 9005	1200	583-005-07

23 Connecting set



- to mount basic or serial cabinets in rows

Order no. 583-000-97

21 Door ventilated (80% perforated)

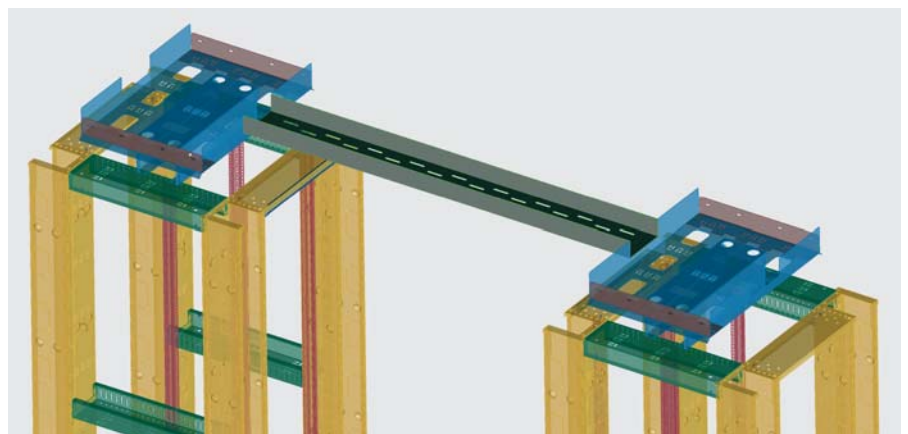


- version **21-1** : mounted flush with frame
- version **21-2** : mounted flush with cable hoops
- with turning lever lock for profile semi cylinder (with push button opening)

Material: sheet metal

Type	W/D	Colour	Order no.
1	900	7035	583-000-76
	900	9005	583-005-76
	600	7035	583-000-95
	600	9005	583-005-95
2	900	7035	583-000-80
	900	9005	583-005-80

24 Cable tray

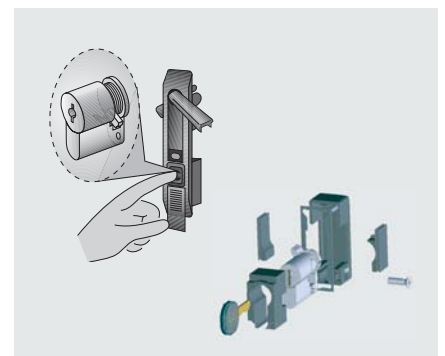


- to guide cables above cooling or heating corridor
- may also be used together with corridor cover
- sizes W x H x D: 200 x 60 x 1500 mm

Material: sheet metal, galvanised

Order no. 583-000-91

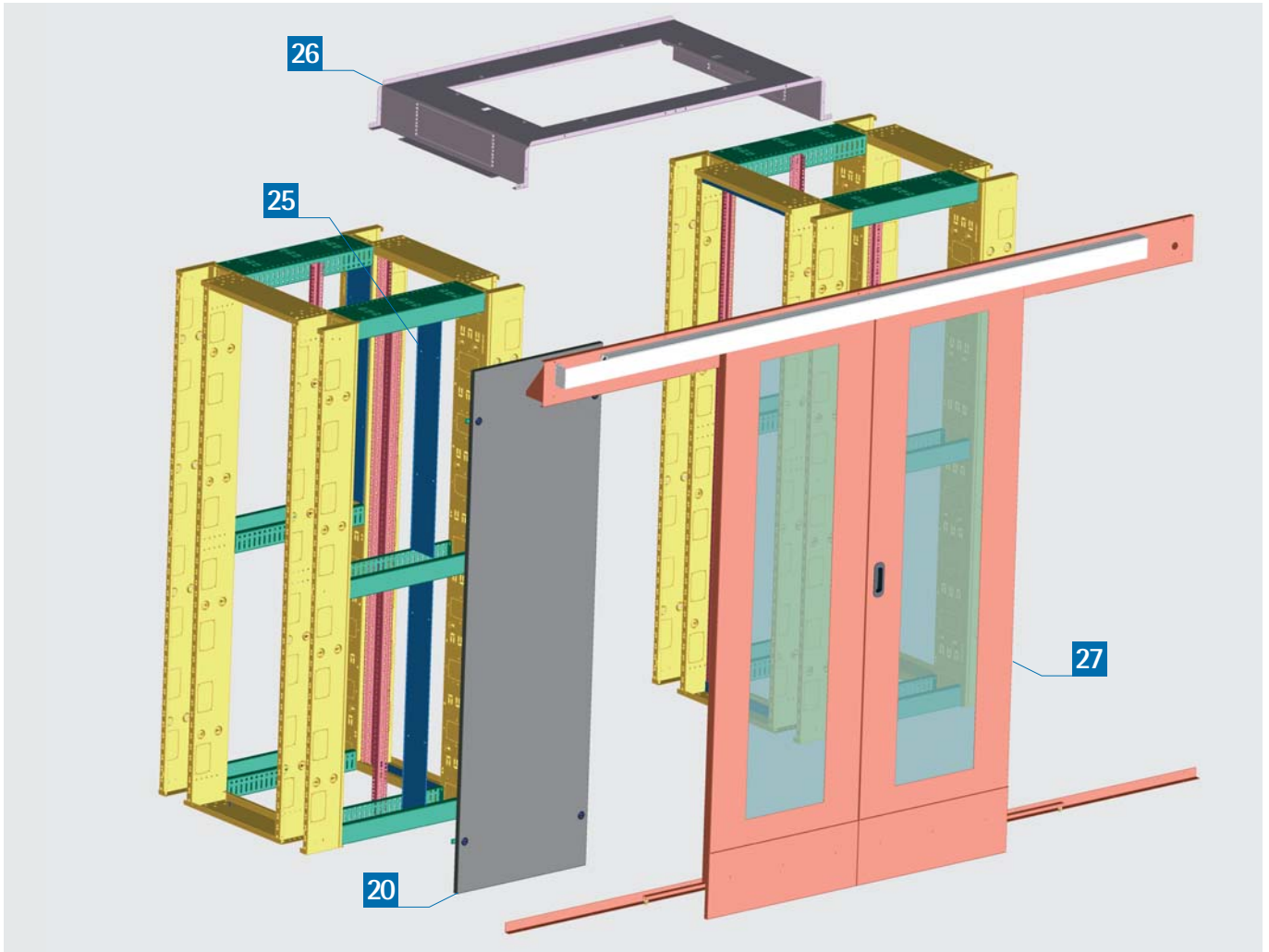
22 Locking system for doors and side panels



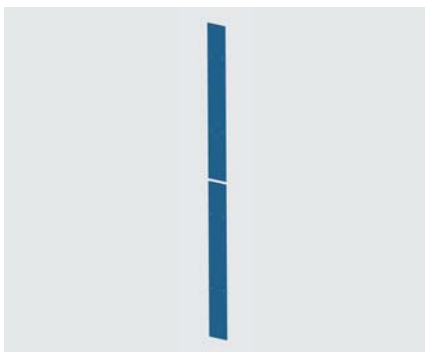
- profile semi-cylinder with EK333 lock for turning lever lock of door **21**
- adapter for installing an individual cylinder (DIN 18252) (without fig.)
- sash fastener with EK333 lock for side panel **20**



Description	Order no.
Profile semi-cylinder	676-316-00
Sash fastener	676-181
Adapter	676-316-10
Spare key EK333	676-200



25 Closing panel for cable duct

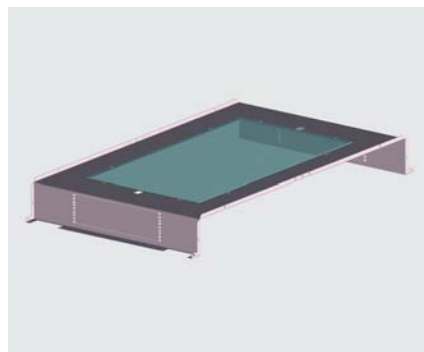


- to seal off the cable duct
- mounting on rear side of cable ducts (only possible when using crossbars)
- set = 2 pieces (1 cable duct)

Material: sheet metal

Colour	Order no.
RAL 7035	583-000-96
RAL 9005	583-005-96

26 Cover for cool corridor



- easy mounting on cabinet system
- with 19" 3U mounting section for power distributors, light systems etc.
- with toughened safety glass
- for cool corridor with width 1,2m

Material: sheet metal/glass

Colour	Width	Order no.
RAL 7035	900	583-000-75
RAL 9005	900	583-005-75
RAL 7035	600	583-000-63
RAL 9005	600	583-005-63

27 Sliding door system



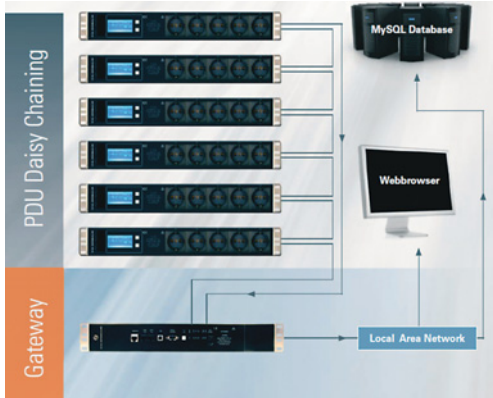
- quick and easy mounting
- for cool corridor with width 1,2m
- height adjustment towards floor is possible

Material: sheet metal/glass

Colour	Version	Order no.
RAL 7035	manually	583-000-59
RAL 9005	manually	583-005-59
RAL 7035	electrically	583-001-13
RAL 9005	electrically	583-001-16



apra power system



Product features

- Power feed: 1-phase or 3-phase, 16 or 32A with CEE plug
- Overload protection with thermal breakers
- Optional outlet measuring
- Optional outlet switching
- Measuring of current, voltage, power, energy and internal temperature. Optional external temperature
- Back-lit LCD display with all measurements
- External temperature connector



19"-PDU



19"-Gateway

Type	Input	Phase Input	Current per phase	Outlet	Measurement input	Measurement per port	Switched outputs	Order-no.
Gateway								591-920-00
Horizontal (19")	400V 16A	3	16	3 x Earthing-pin	X			591-920-01
Vertical	230V 16A	1	16	18 x C13	X			591-920-02
Vertical	230V 16A	1	16	18 x C13	X	X		591-920-03
Vertical	230V 16A	1	16	18 x C13	X		X	591-920-04
Vertical	230V 16A	1	16	18 x C13	X	X	X	591-920-05
Horizontal (19")	230V 16A	1	16	4 x C13, 5 x C19	X			591-920-06
Horizontal (19")	230V 16A	1	16	4 x C13, 5 x C19	X	X		591-920-07
Horizontal (19")	230V 16A	1	16	4 x C13, 5 x C19	X		X	591-920-08
Horizontal (19")	230V 16A	1	16	4 x C13, 5 x C19	X	X	X	591-920-09
Vertical	230V 32A	1	32	4 x Earthing-pin, 12 x C13, 2 x C19	X			591-920-10
Vertical	230V 32A	1	32	4 x Earthing-pin, 12 x C13, 2 x C19	X	X		591-920-11
Vertical	230V 32A	1	32	4 x Earthing-pin, 12 x C13, 2 x C19	X		X	591-920-12
Vertical	230V 32A	1	32	4 x Earthing-pin, 12 x C13, 2 x C19	X	X	X	591-920-13
Vertical	400V 16A	3	16	3 x Earthing-pin, 18 x C13	X			591-920-14
Vertical	400V 16A	3	16	3 x Earthing-pin, 15 x C13	X	X		591-920-15
Vertical	400V 16A	3	16	3 x Earthing-pin, 15 x C13	X		X	591-920-16
Vertical	400V 16A	3	16	3 x Earthing-pin, 15 x C13	X	X	X	591-920-17
Vertical	400V 16A	3	16	1 x Earthing-pin, 8 x C19	X			591-920-18
Vertical	400V 16A	3	16	1 x Earthing-pin, 8 x C19	X	X		591-920-19
Vertical	400V 16A	3	16	1 x Earthing-pin, 8 x C19	X		X	591-920-20
Vertical	400V 16A	3	16	1 x Earthing-pin, 8 x C19	X	X	X	591-920-21
Vertical	400V 16A	3	16	3 x Earthing-pin, 3 x C19, 21 x C13	X			591-920-22
Vertical	400V 16A	3	16	3 x Earthing-pin, 3 x C19, 21 x C13	X	X		591-920-23
Vertical	400V 16A	3	16	3 x Earthing-pin, 3 x C19, 21 x C13	X		X	591-920-24
Vertical	400V 16A	3	16	3 x Earthing-pin, 3 x C19, 21 x C13	X	X	X	591-920-25
Vertical	400V 32A	3	32	3 x Earthing-pin, 24 x C13	X			591-920-26
Vertical	400V 32A	3	32	3 x Earthing-pin, 24 x C13	X	X		591-920-27
Vertical	400V 32A	3	32	3 x Earthing-pin, 24 x C13	X		X	591-920-28
Vertical	400V 32A	3	32	3 x Earthing-pin, 24 x C13	X	X	X	591-920-29
Vertical	400V 32A	3	32	1 x Earthing-pin, 2 x C13, 15 x C19	X			591-920-30
Vertical	400V 32A	3	32	1 x Earthing-pin, 2 x C13, 15 x C19	X	X		591-920-31
Vertical	400V 32A	3	32	1 x Earthing-pin, 2 x C13, 15 x C19	X		X	591-920-32
Vertical	400V 32A	3	32	1 x Earthing-pin, 2 x C13, 15 x C19	X	X	X	591-920-33
Temperature sensor								591-920-34



apra cooling system



Cyber Row

- Directed cooling of high density racks
- Highly efficient cooling of warm or cold-aisle containment systems
- For data centres with and without raised floor
- Complete separation of the systems between IT-Rack and temperature control
- Horizontal airflow in front of the racks
- Cooling power up to 56 KW



Cold water cooling

- A separate cold water generation is required.

Type	Height mm	Depth mm	Width mm	Cooling capacity k/W	Air flow m ³ /h	Volume flow rate m ³ /h	Order-no.
EHMC2W	1950	1175	400	32,2	6000	5,5	235-200-60
EHME5W	1950	1175	600	56,0	10.800	9,6	235-200-65

apraNET network technology division of apra-norm Elektromechanik GmbH
 Gewerbegebiet · D-54552 Mehren/Vulkaneifel
 Phone: +49 (0) 65 92 95 12-0 · Fax: +49 (0) 65 92 95 12-50 · vertrieb@apranet.de
www.apranet.de

... the perfect shell for valuable electronics

