



205 • "Hard Box" industrial PC enclosure

"Hard Box" industrial PC enclosure

- for ATX applications
- for installing:
 - 1x 5 1/4" disk drive
 - 1x 3 1/2" floppy drive
 - 1x 3 1/2" hard drive
- cut-out for PS/2 power supply
- fans can be installed at the rear
- board chassis for holding the motherboard
- can be customised for your specific applications
- numerous assembly options:
 - 19" installation (optional)
 - wall mounting
 - mounting on doors or mounting plates

Application:

compact, universal IPC enclosure

Construction:

clinched sheet metal design

Material:

sheet steel 1.0 mm

Finish:

galvanised

Dimensions (H x W x D):

177 mm x 405 mm x 362,5 mm

Delivery:

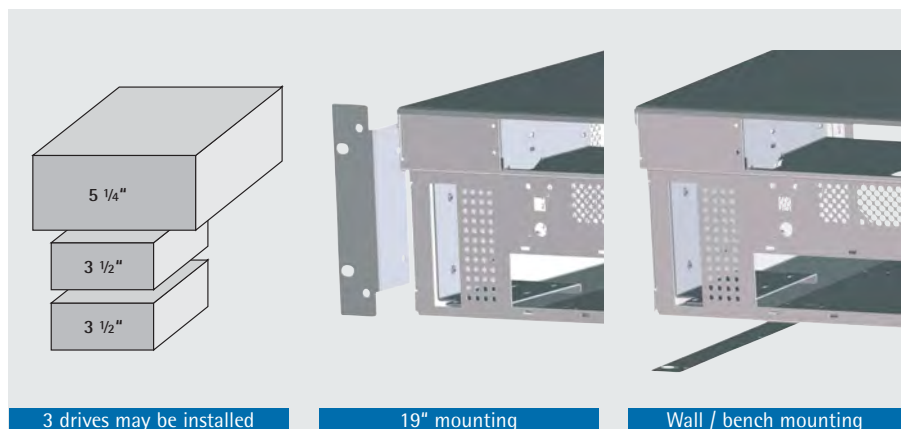
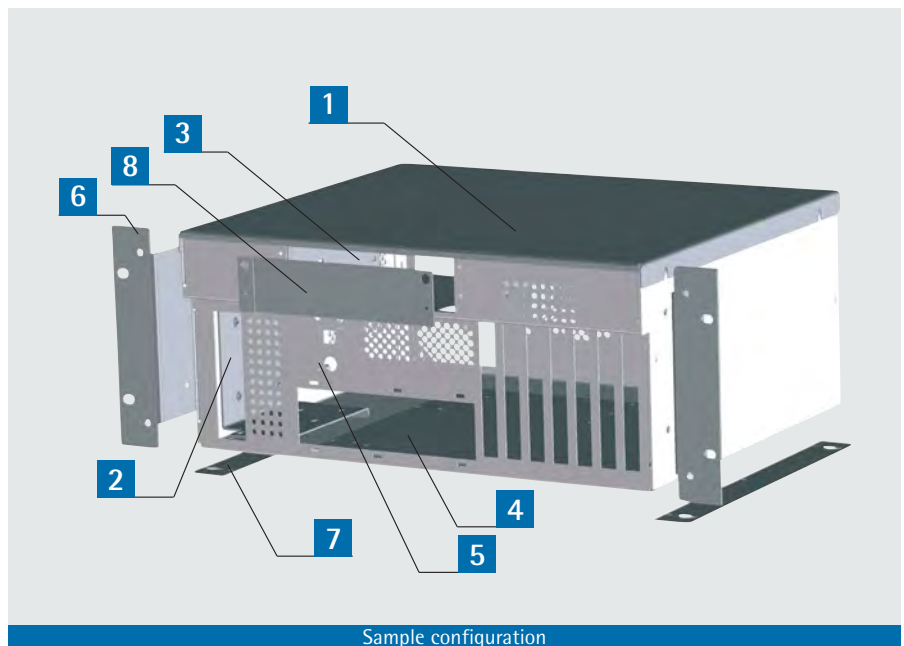
assembled

Delivery

Item	Pc.	Description
1	1	Enclosure chassis with top panel
2	1	Drive cage 3 1/2"
3	1	Drive cage 5 1/4"
4	1	Board chassis
5	1	Board with LED, reset button and piezo speakers
6		Optional: 19" front brackets (see p. 61, please order separately)
7		Optional: mounting angle (see p. 61, please order separately)
8		Optional: panel for "Hard Box" (see p. 61, please order separately)

Order no.

205-880-00





"Hard Box" industrial PC enclosure / Industrial PC Enclosure



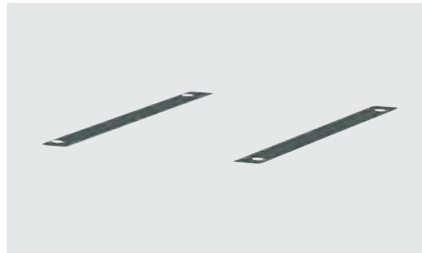
6 19" brackets, 4 U



- incl. assembly material

Material:
sheet steel 2.0 mm
Finish:
galvanised

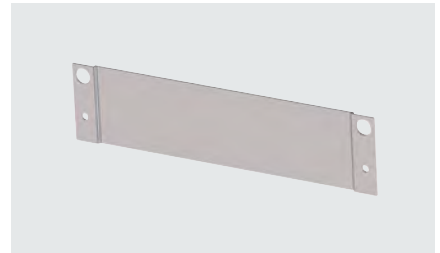
7 Set of mounting brackets



- incl. assembly material

Material:
sheet steel 1.0 mm
Finish:
galvanised

8 5 1/4" cover



- for covering the 5 1/4" drive

Material:
cover: sheet steel 1.5 mm
cover EMC: sheet steel 1.0 mm
Finish:
cover: galvanised
cover EMC: RAL 7035 light grey

Order no.
205-880-10

Order no.
205-880-12

Description	Order no.
Panel for Hard Box	205-880-11
Panel for Hard Box EMC	202-800-26

Industrial PC Enclosure

- Mini-ITX form factors
- EMC compliant construction
- without fan
- vibration damped hard drive bracket
- 1x PCI-Slot by risercard
- 1x drive bracket for 3 1/2"-hard drive

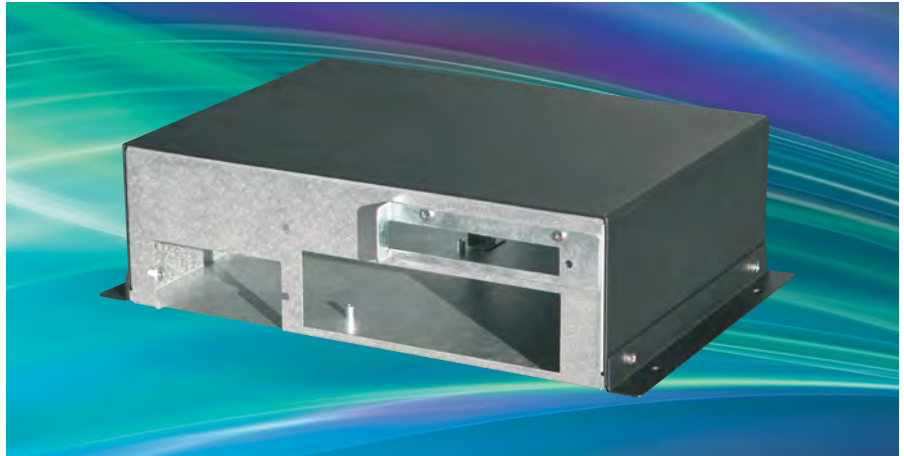
Application:
compact, universal IPC enclosure

Material:
sheet steel 1.0 mm

Finish:
RAL 7035 light grey / galvanised

Dimensions (H x W x D):
96 mm x 303 mm x 221 mm

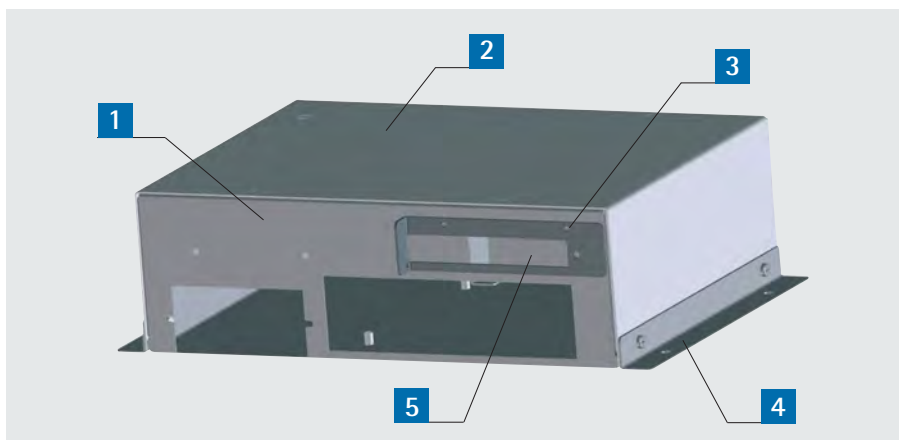
Delivery:
assembled



Other form factors and configuration levels on request.

Delivery

Item	Pc.	Description
1	1	Chassis
2	1	Top
3	1	Slot cover
4	2	Wall mounting bracket
5	1	Internal drive holder 3,5"



Order no.
205-820-00